

ICZ LETVIS® - REP Replay

HMI FOR REPLAYING ARCHIVED DATA

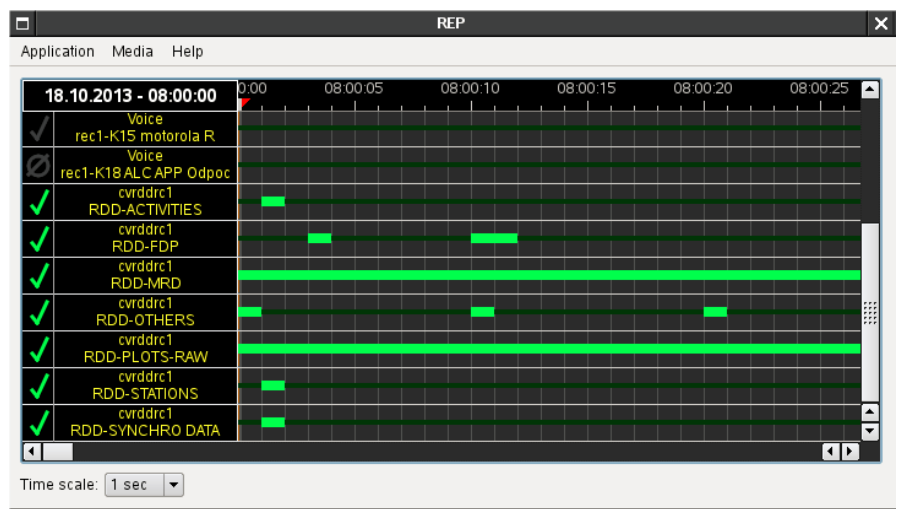
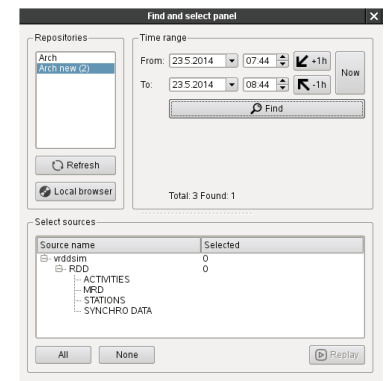
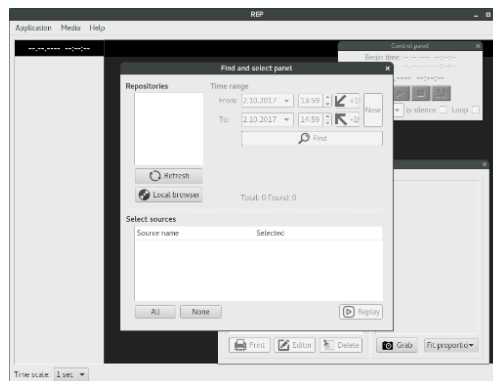
THE ICZ LETVIS® REP (REPLAY) PRODUCT ENABLES THE REPLAY OF RECORDED DATA AND VOICE.

The ICZ LETVIS® REP product provides an HMI for searching and replaying data and audio archives created by the ICZ LETVIS® ARCH system on compatible playback processes. This makes it possible, for example, to achieve the objective reconstruction of a recorded airspace situation over a specific time period, and to replay the voice communication of the operator and others, which could be of benefit, for example, when reconstructing and investigating incidents.



[BASIC FUNCTIONS]

- ▶ Recording selection
 - Connecting recordings
- ▶ Display of sources
 - Data availability for a given source
- ▶ Playback controls
 - Start, stop, shift
 - Enable/disable a source
- ▶ Export recordings
 - Voice files
 - Print reports



[ICZ LETVIS® - REP]

■ APPLICATION SW AND OPERATING SYSTEM

OPERATING SYSTEM	LINUX SLED/SLES 12 (X64) AND HIGHER
Application SW	The ICZ LETVIS® REP includes: <ul style="list-style-type: none"> ▶ REP playback control client ▶ PulseAudio process

■ HARDWARE AND TECHNICAL PARAMETERS

Basic HW	HP/DELL/COTS – INTEL platform
Recordings data format	ALES-FDR-D, ALES-FDR-V
Network protocols used	TCP/IP

COMMERCIAL CONTACT

ALES a.s. Soblahovská 2050
911 01 Trenčín
TEL.: +421 326 582 580
E-MAIL: sales@ales.sk

COMMERCIAL CONTACT

ICZ a.s. Na hřebenech II 1718/10
140 00 Prague 4
TEL.: +420 222 271 111
E-MAIL: marketing@i.cz